



What's New?

In April 2018 the forum Steering Group members made a huge decision to no longer be 'hosted' by our local 'Contact' office in Wandsworth. 'Contact', formally known as 'Contact a Family' had for 9 years facilitated the forum to grow, holding our grant from the DfE (Department for Education) and facilitating a forum administrator, through funding from the LA (Local Authority).

As the forum has grown and developed, so have our 12 Steering Group members (all voluntary). The forum felt it would like to not only govern itself but gain its own autonomy locally. Sadly, the forum, PPA, was often confused or mistaken for 'Contact'. Although we have always worked closely together and wish to continue our positive local relationship, it is important that SEND parent/carer's locally can distinguish our very different roles, however complimentary they are.

We would like to take this opportunity to thank Contact for there support and we wish them every success for the future!

What does that mean in terms of moving forward? We wish to continue to build our membership locally and have this year done much more outreach, attending several mainstream primary school coffee mornings, attending both the primary and secondary SENCO forums, to not only build our membership but to gain thoughts/views of parent/carer's across Wandsworth.

This year we have continued our strategic role locally with the LA/CCG (Local Authority/Clinical Commissioning Group) and other key professionals, including CAMHS/Early years/SENCO's and other local voluntary groups/charities, locally and nationally. We continue to raise

the voice of parent/carer's locally, however we need your voices to be part of those discussions. Together, as SEND parent/ carer's, we can make positive changes to ensure the best possible life outcomes for our children/young people in Wandsworth.

We cannot express enough the importance of parent/carers in local decision making. Positive Parent Action are here to enable you all to do this. Whether you would like to attend our monthly meetings, attend meetings with professionals or just to call or email us with any SEND related issues that you would like us to put forward to the local authority or health professionals, please sign up today. We are here to support you in every way we can. Our Steering Group members have a huge wealth of knowledge and experience of SEND, across all abilities and disabilities.

Every parent/carer of a child young person (0-25) with special educational needs and or disabilities, registered with a GP in Wandsworth are welcome to join us - You can be involved as much or as little as you want!

Our PPA postal address remains at the Early Years Centre, No.1 Siward Road, but as we are all now parent volunteers, we are not office based.

A QUICK REMINDER OF WHO PPA ARE

WANDSWORTH'S PARENT CARER FORUM

Our aim is to represent all families in the Borough who have a child or young person with a disability or special needs. We meet every month during school term time and undertake activities that are aimed to enable parent/carers to make the most of local services. Anyone with a child or young person with a disability and or a special educational

need are welcome to be part of our forum. Please remember, there is no commitment - **all are welcome!**

If you are interested in being a more active member of our forum, ie, representing PPA, by attending meetings with the Local authority/Health etc, please do contact us.

National Network of Parent Carer Forums



Positive Parent Action is a member of the National Network for Parent Carer Forums!

The National Network of Parent Carer Forums (NNPCF) is the independent national voice of parent carer forums. Our mission is to deliver better outcomes for families living with special educational needs and disabilities (SEND).

We aim to:

- ❖ Create a culture of participation and co-production across the education, health, social care and the voluntary sectors. This means that we are involved in all aspects of designing, commissioning, delivering and reviewing services as an equal partner.
- ❖ Empower our members to ensure that their voices are heard at a local, regional and national level.
- ❖ Inspire our partners by sharing good practice and knowledge.

Our vision is a for the best possible opportunities and futures for all

children and young people with SEND and their families.

NNPCF is a representative organisation, it consists of up to 152 local parent carer forums at any time across England. Each of the nine geographical local authority regions are collectively represented within the NNPCF Steering Group. This means each region has a parent carer forum representative who has been appointed to represent their regional and local interests at national level to empower and enable strategic parent carer participation.

Positive Parent Action's Steering group

Positive Parent Action is currently run by a steering group consisting of eleven Wandsworth parent/carers who meet once a month.

We discuss funding, local issues and try to make sure that Positive Parent Action continues to meet the needs of all parents of disabled and special needs children in the Borough.

We are lucky that our group of parent/carer volunteers have a good range of experiences as our children and young people are all ages, have a range of disabilities and attend all provisional settings ie mainstream/special school.

We find this helps us to identify what is currently happening with SEND services at all transitional stages of our children and young people's journeys

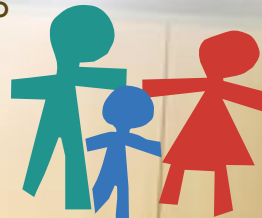
within Wandsworth be it education, health or social care related, which then enables us as a forum to feedback these experiences to the Local Authority and the NHS.

This also helps us to look at what workshops and events that would most benefit Wandsworth's parent/carers to empower them and have all the knowledge and skills they need to support their child or young person.

Anyone is welcome to join our steering group!

If you are interested in becoming part of the Positive Parent Steering Group or have any suggestions for workshops/events that you would like to attend, please contact us by email:

positiveparentaction@yahoo.co.uk



**Positive
Parent
Action**

for disabled children and young people in Wandsworth



Legal Aspects of Education and Disability

Zach Esdaile, Head of Bowers Equality, Education and Disability department at Bowers Solicitors

Zach provides 'cradle to the grave' support for those with disabilities and special needs *focusing on:*

- ❖ **Special educational needs.** I am extremely experienced and successful in representing cases before the First Tier Tribunal for special needs and disabilities. My aim as much as possible is to seek a resolution at an early stage'.
- ❖ **Support for young people at University and within the workplace.**
- ❖ **To provide protection for people with significant needs and their families in areas of mental capacity and trusts to include deputyships, LPA, and wills.**

We have been very lucky to have been able to host three legal workshops with a fantastic solicitor, Zach Esdaile!

Parent views on workshop

For more information about the service Zach provides please visit:
www.bowers-solicitors.com/our-team/zach-esdaile
email: zach@bowers-solicitors.com

WORKSHOPS

16-25 transitions – Wills, Power of attorney and the Care act.

Tribunals – What to expect and how to challenge.

General Legal SEND matters – Education, Social care & Health.

All workshops were very well attended and Zach was great by giving everybody a chance to speak and share their experiences. He also spoke to parents privately if requested.

PPA ARE MAKING A DIFFERENCE
and WE **DO** NEED YOUR INPUT TOO!
PLEASE COME AND JOIN US



SUGGESTIONS PLEASE!!!

Is there a specific topic or theme of workshop that you would like to attend?

Let us know at:

positiveparentaction@yahoo.co.uk

or

info@positiveparentaction.org.uk

Welcome to the THRIVE Online

Formally known as Wandsworth's Family information Service!
<https://thrive.wandsworth.gov.uk>

It provides free information and advice on services, including activities for children and young people aged 0-19 years (or 25, if the child or young person has a special need or disability).

Help, advice and information provided includes:

Telephone help and advice:
available Monday - Friday 9am - 5pm
Email help and advice:
available Monday - Friday 9am - 5pm

A website with a directory of services and organisations that can help and benefit families with children aged 0-18: available 24/7

<https://www.wandsworth.gov.uk/localoffer>

Wandsworth's Local Offer for children and young people aged 0-25 with Special Educational Needs and/or Disabilities (SEND)

On this SEND Local Offer website there is information and contact details for the local authority, education, health, voluntary groups who can support you and your child or young person, from 0 to 25 years old.

Contact details below:

telephone:
020 8871 7899
email:
thriveonline@richmondandwandsworth.gov.uk
website:
www.wandsworth.gov.uk/thriveonline

Family Information Service has now become



parenting support

education

childcare

family activities

SEND local offer

▶▶ and more!

www.wandsworth.gov.uk/thriveonline

email: thriveonline@wandsworth.gov.uk
telephone: 020 8871 7899



PLEASE VISIT AND SUPPORT!

PADDOCK SCHOOL CAFÉ

We hosted our November PPA meeting at Paddock School Café!

We had a wonderful time! The young people and the staff were really friendly. The service was excellent, and the food was delicious.

During term time, Paddock School Café is open to the public every **Wednesday from 10.00am to midday** for light snacks including homemade muffins and tea and coffee and every **Thursday from 10.00 am to 2.00pm** to also include lunch.

The café is run by Post 16 students with the help of school staff, and some amazing local community volunteers.

The café has two aims; firstly, to provide work experience for older students – something that is very

difficult to do outside the protective environment of school.

The students are taught the many skills of working in a café: to carry a tray, work the till, clear tables, take orders to customers, wash up and make the food that is sold in the café.

Secondly, and just as importantly, the café showcases the abilities of young people with learning difficulties. At Paddock School Café you will witness what the students can do, see their numerous abilities rather than focus on their disabilities.

